


Vintage Keys

 Muse Sounds Edition

Vintage Keys



Muse Sounds Edition

The **Spitfire Audio Vintage Keys - Muse Sounds Edition** is crafted exclusively for the MuseSounds engine inside of MuseScore Studio.

Vintage Keys - Muse Sounds Edition offers an exceptional collection of timeless electric pianos, expertly crafted to capture the essence of classic vintage tones. Featuring the iconic Clavinet, Bass Electric Piano, Wurlitzer 200A, and Suitcase Electric Piano, this library brings the rich, soulful sounds of the past into your modern productions.

From the funky, percussive punch of the Clavinet to the smooth, velvety textures of the Suitcase EP, each instrument has been meticulously sampled and curated to provide authentic, vintage-inspired tones. Whether you're crafting a retro groove, adding warmth to a contemporary track, or seeking that perfect, expressive electric piano sound, Vintage Keys offers the versatility and character you need.

Vintage Keys delivers the sound and feel of legendary instruments with the convenience of notation.

Instruments Included

Bass EP

Clavinet

Suitcase Electric Piano

Wurlitzer 200A

Presets

The following are the basic presets without effects. There are many more presets that include tremolo, rotary speaker, vibrato and delay.

Bass EP DI - Direct Outputs

Bass EP Amp 1 - Ampeg amp

Bass EP Amp 2 - Mesa Boogie amp

Vintage Keys

 Muse Sounds Edition

Bass EP Tines - Mic'd internals

EP 73 DI - Direct Outputs

EP 73 Amp 1 - Ampeg amp

EP 73 Amp 2 - Mesa Boogie amp

EP 73 Tines - Mic'd internals

Clav 421 - Amp with MD421 microphone

Clav 57 - Amp with SM57 microphone

Clav Rib - Amp with ribbon microphone


Clav Tube - DI with tube preamp

Wurli DI - Direct Outputs

Wurli Amp 1 - Ampeg amp

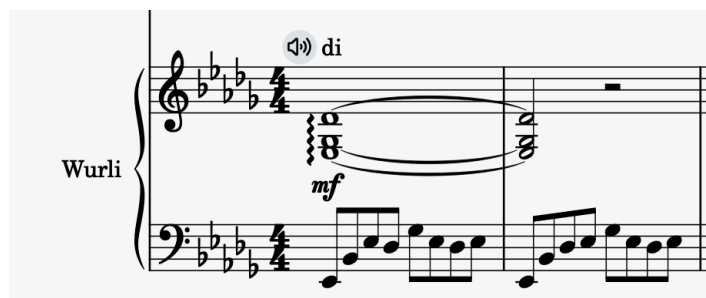
Wurli Amp 2 - Mesa Boogie amp

Wurli Speaker - Mic'd internal speaker

 Tip: Using the DI presets with an amp modelling plugin or other effects can add some serious vintage tone and drive to the sound of these classic electric pianos. Give it a try!

Accessing Presets in MuseScore Studio:

The presets in MuseScore Studio are accessible through the **Staff Text** feature. To select a preset, first select the starting note to be assigned, then assign Staff Text to it using the key command **COMMAND + T on Mac** or **CONTROL T on PC**. Next, click on the speaker icon above the staff with the assigned note to open the Sound Flags menu. From the popup menu, you can select the desired preset.



The **Clavinet** presets are labeled by the pickups:

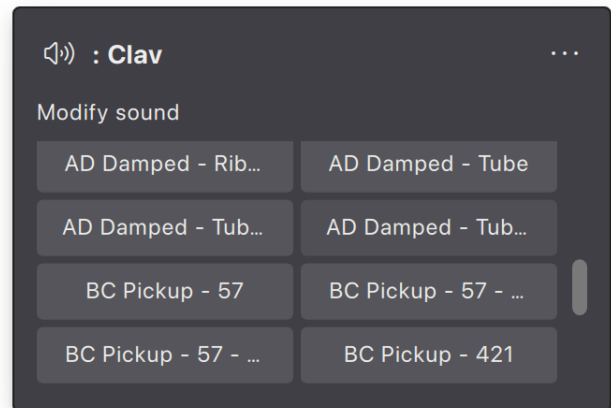
AC

AD

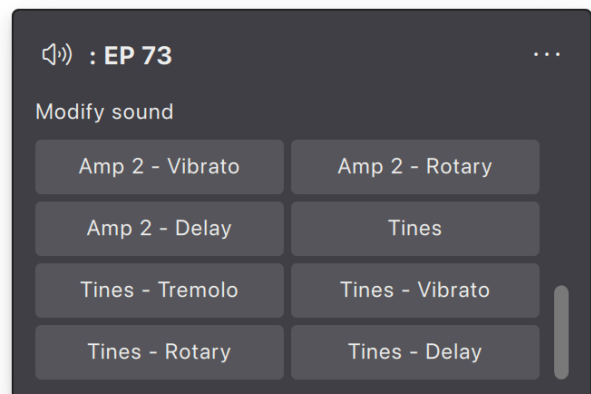
BC

BD

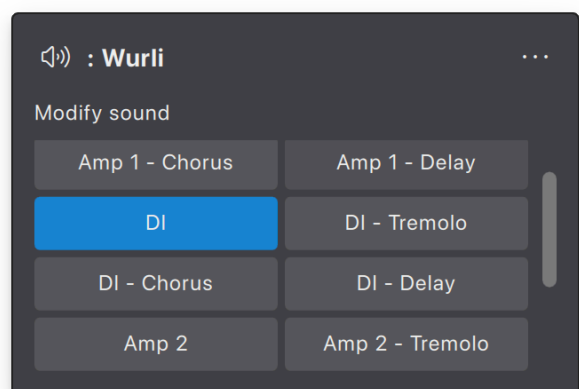
Like a guitar, these pickups are in different positions on the clav strings and, on the original instrument, can be selected with rocker switches. The presets were sampled with the different combinations of pickups.



On certain presets, the **EP 73** and **Bass EP** presets include additional effects: tremolo, vibrato, rotary and delay.



Certain **Wurli** presets also include additional effects: chorus, delay and tremolo.



Playback Details

The electric pianos were sampled several velocity layers and repetition samples.



About Muse Sounds Editions

Muse Sounds Editions are exclusively created editions of sample libraries, designed to work with the Muse Sounds Engine, found inside MuseScore Studio and StaffPad.

These editions are derived from the same content, but are not compatible with Kontakt or VST versions of the same library.

The Muse Sounds concept is to distill the technical and sonic achievements of complex, vast sample libraries, which were often created to be triggered via complex MIDI programming, into a simple, musical and intuitive experience for composers who work with notation.

The Muse Sounds team is proud to work with prestigious sample developers, and to bring these beautiful sounding creations to life for the notated page.

Thank you for supporting Muse Sounds!