

# Audio Imperia Chorus



Muse Sounds Edition

---

# Audio Imperia Chorus



The **Audio Imperia Chorus - Muse Sounds Edition** is crafted exclusively for the Muse Sounds engine: derived from the Audio Imperia's "Chorus" and carefully optimised for playback from notation.

The library was recorded in Budapest with 24 women and 24 men and covers a large selection of traditional articulations and syllables. The syllables include three different variations of traditional, energetic and slow to cover choral music from gentle quiet sections to aggressive trailer music.

This edition features a single mixed microphone position, capturing the ambience and reverberation of the Rottenbiller recording stage.

## What's Included:

Men

Women

Ensemble - combines both men and women into a choir on a single stave

## Articulations:

### Traditional Articulations

- Ah
- Ooh
- Mmh
- Eh
- Heh
- Oh

### Traditional Syllables

- Deh
- Fah
- Keep
- Keh
- Lah
- Meet
- Muht
- Rah
- Seeh
- Soh
- Tooh
- Includes S and Non-S releases

### Energetic and Slow Syllables

- Deh
- Fah
- Keep
- Keh
- Lah
- Maht
- Meet
- Mooht
- Rah
- Seeh
- Soh
- Thuh
- Taah
- Includes S and Non-S releases

## Special Effects

- Body Percussion - stomps, claps and clicks (finger snaps)
- Vocalize FX - Shh, Hah etc.
- Risers Rhythmic Loops

## Accessing Presets in MuseScore Studio:

The presets in MuseScore Studio are accessible through the **Staff Text** feature.

To select a preset:

- Select the starting note to be assigned
- Assign **Staff Text** to it with Command T on Mac or Control T on PC
- Click on the **speaker icon** above the staff with the assigned note to open the Sound Flags menu
- select the desired preset from the popup menu

If there are more than eight available, you may need to scroll to see all the options.

The first three presets still allow for tradition lyric selection of: Ah, Ooh, Mmh, Eh, Eeh and Oh.

The Traditional Articulations preset allows for both traditional articulations and traditional syllables to be selected.

To access Energetic and Slow Syllables, their corresponding preset must be selected first.

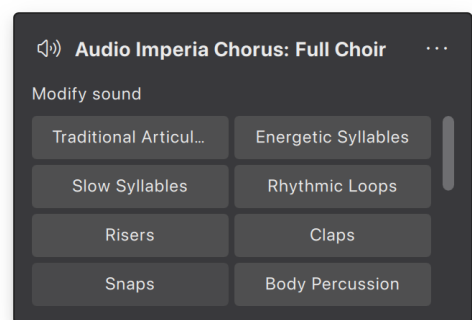


Fig. 1 StaffText Menu for preset selection.

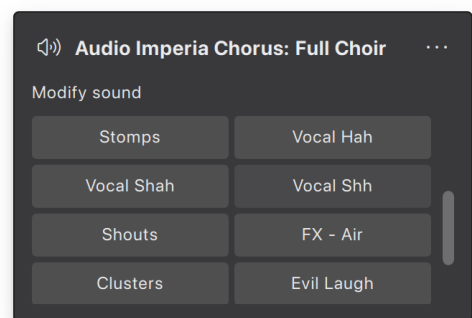


Fig. 2 Scrolling reveals more presets.

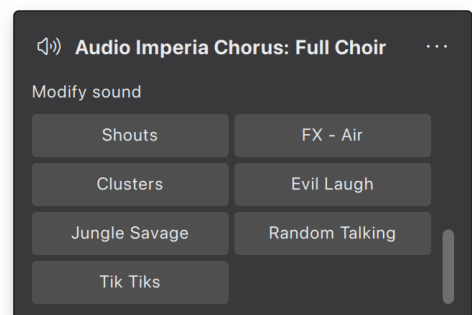



Fig. 3 More presets

## Assigning Lyrics

This library makes extensive use of the **lyrics** feature within StaffPad and MuseScore Studio. Setting notes with lyrics that match up with the available articulations allows the parts to sing the correct sounds.

Lyrics are assigned in MuseScore Studio by selecting a note and pressing **COMMAND + L** on MAC or **CONTROL + L** on PC. While entering lyrics, pressing the SPACE BAR moves the lyric entry to the next note.

Reference the articulations list above for the lyrics that are accessible. Remember that the syllables include plural versions so that “Lah” can be entered as “Lahs” to include an “s” on the note release.

 Words or complex passages can be built by combining syllables. The Syllables also include variations with plural “S” releases and non-“S” releases. Be sure to try these out!

## Body Percussion

Chorus includes Men and Women body percussion with stomps, claps and clicks (finger snaps).

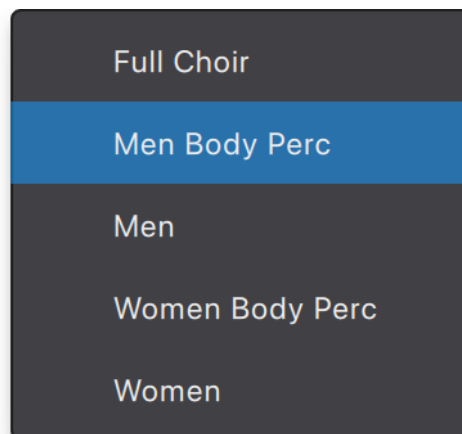


Fig. 5 Body Percussion



To use the Body Percussion, assign a percussion stave:

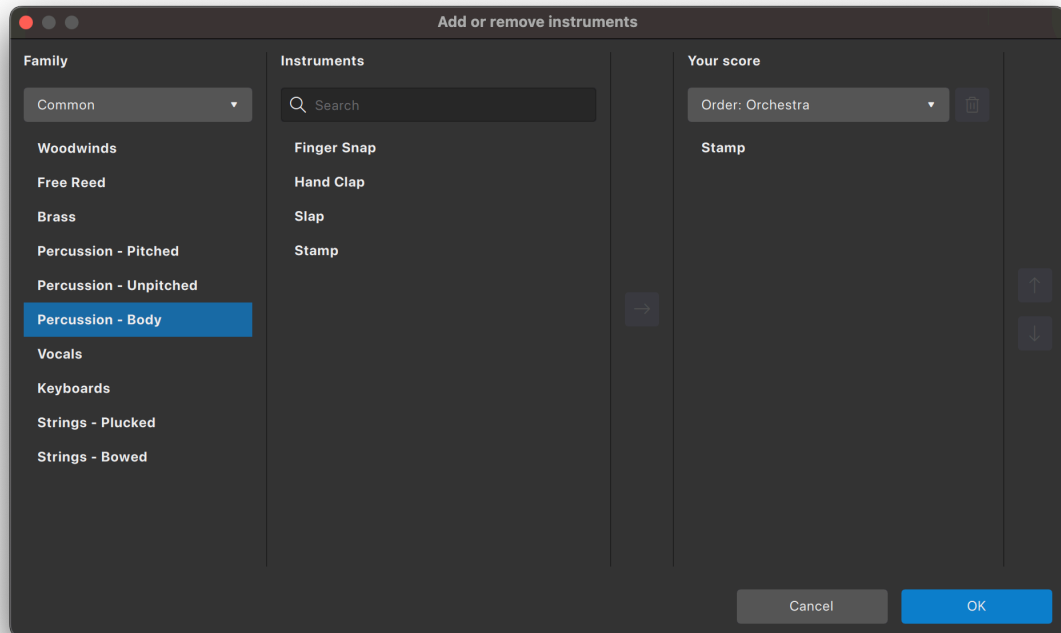


Fig. 6 Assigning a Body Percussion Stave

Entering notes on the stave will call up the Percussion Panel in MuseScore Studio 4.5 and later:

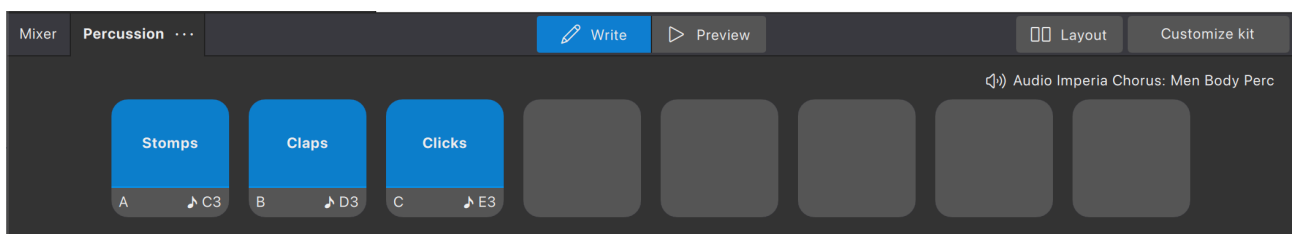


Fig. 7 Body Percussion Drum Pads for Note Entry

# Audio Imperia Chorus

 Muse Sounds Edition

Entered notes:

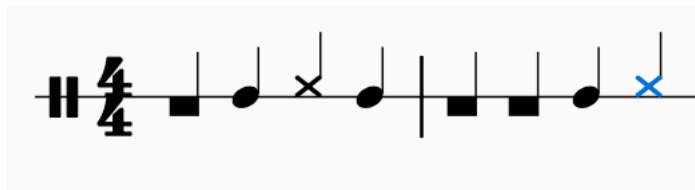


Fig. 8 Body Percussion Entered Notes

## FX When Using Non-Body Percussion Instruments

FX can be selected in StaffText presets. **All effects are assigned to middle C.** Traditional or X noteheads can be used.

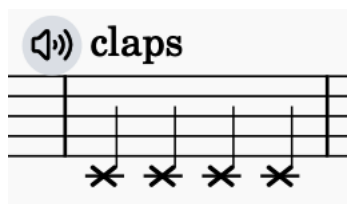


Fig. 9 Claps assigned to middle C

## About Muse Sounds Editions:

Muse Sounds Editions are exclusively created editions of sample libraries, designed to work with the Muse Sounds Engine, found inside MuseScore Studio and StaffPad.

These editions are derived from the same content, but are not compatible with Kontakt or VST versions of the same library.

The Muse Sounds concept is to distill the technical and sonic achievements of complex, vast sample libraries, which were often created to be triggered via

# Audio Imperia Chorus



Muse Sounds Edition

---

complex MIDI programming, into a simple, musical and intuitive experience for composers who work with notation.

The Muse Sounds team is proud to work with prestigious sample developers, and to bring these beautiful sounding creations to life for the notated page.

Thank you for supporting Muse Sounds!

V.1.1